

DISCOVER  
THE  
SCIENCE



# CONTENTS

Vision - Mission.....	3
-ABSimplant Applications	
-Scientific Advisory Board	
ABSimplant SLA Surface.....	6
Histomorphometric Evaluation .....	7
Application Protocol .....	8
Implant Box, Content and User Manual.....	9
Bone Level Implants .....	11
Tissue Level Implants .....	13
Cover Screw.....	15
Transfer Piece.....	15
Healing Caps.....	17
Prosthetics.....	21
I. Cementable Abutments.....	21
a. Bone Level Abutments	
Straight Abutments.....	21
Esthetic Abutments.....	23
Angled Abutments.....	25
b. Tissue Level Abutments.....	29
Straight Abutments.....	30
Angled Abutments.....	30
II. Locator Abutments.....	31
III. Screw Retained Abutments.....	35
IV. Angled Screw Retained Abutments.....	39
V. Ti-Base Autments.....	43
VI. Meso Abutments.....	45
Impression Transfers.....	47
Bone Level.....	48
Tissue Level.....	50
Surgical Set.....	53
Stopper Kit.....	56
Osteotome Instrument Kit For Sinus Floor Elevation.....	57
Osstell Guide.....	58
Planmeca Romexis.....	59



# MISSION

## MISSION

ABS implant Health Products Company aims to be a healthcare company that keeps innovations alive by adding new values every day with R&D studies in every process, enabling everybody to use and keep up with the latest technology in order to raise the quality of life and health.



## VISION

Our main target is to be a trustworthy and global company in the dental sector by providing contemporary, scientific and highly qualified products.

# ABS IMPLANT APPLICATIONS



As an expected result of our sense of manufacturing that does not compromise quality and scientificness, success of our implants was proved with 2,5-year clinical follow-up. In accordance with the scientific literature, ABS implant applications does not cause periimplantitis, pathological marginal bone loss, screw loosening etc.



**Dr. Alper ALKAN**

Prof. Dr., Bezmiâlem Vakıf University Faculty of Dentistry,  
Dept. of Oral and Maxillofacial Surgery,

## Education

- PhD, Ankara University Faculty of Dentistry, Oral and Maxillafacial Surgey, 1998,
- Bachelors, Ankara Univesity, Faculty of Dentistry, 1993

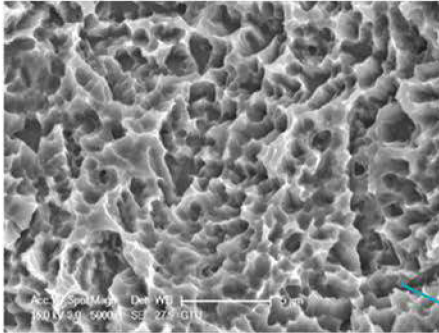
## Professional Resume

- Asst.Prof. Ondokuz Mayıs University, Samsun, 1999 - 2004
- Assoc. Prof. Ondokuz Mayıs University, Samsun, 2004 - 2006  
Erciyes University, Kayseri, 2006 - 2009
- Prof. Erciyes University, Kayseri, 2009 - 2017  
Head of the department 2006 - 2017  
Dean 2009 - 2015 -  
Clinical observer (St George's Hospital, London, UK) 2010  
Bezmiâlem Vakıf University, İstanbul, Dean 2017-

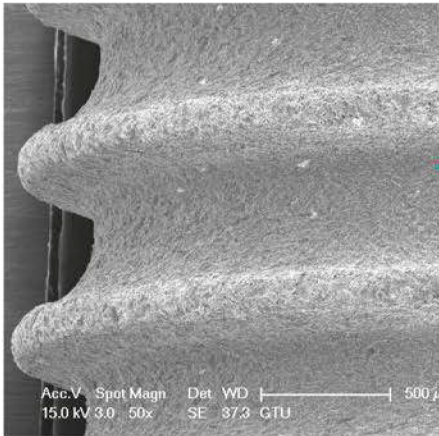
**Dr. Ahmet Emin DEMİRBAŞ**

Ass. Prof. Dr. Erciyes University Faculty  
of Dentistry, Oral and Maxillofacial  
Surgery, Kayseri

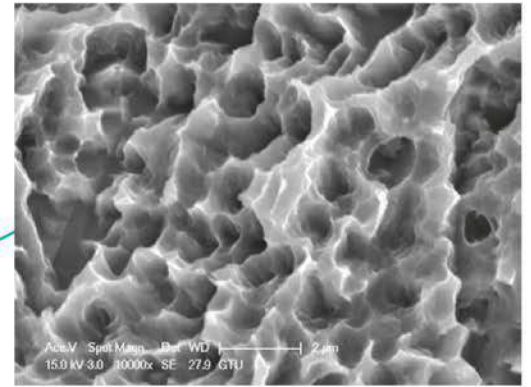
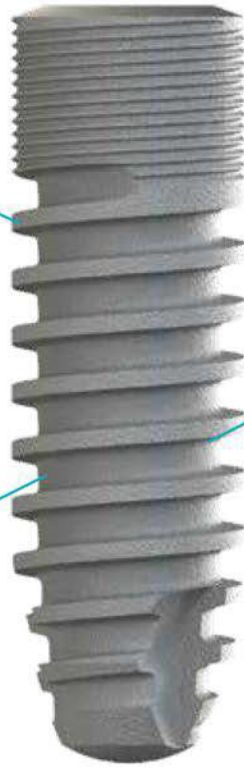
# ABS IMPLANT SLA SURFACE



5000x

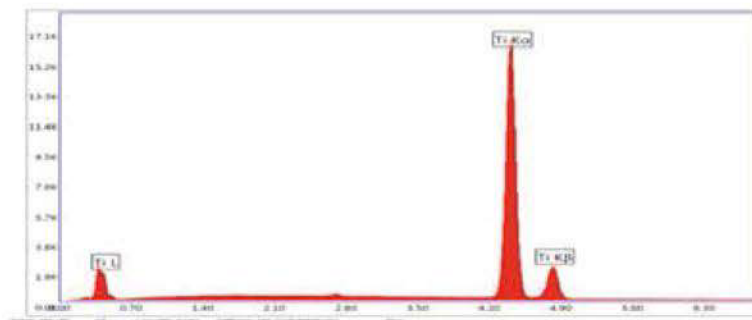


50x



10000x

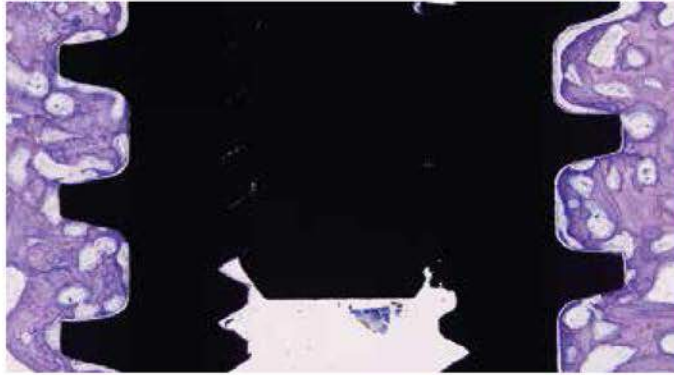
As a result of sandblasting and double etching process, **Absimplant** has a homogenous rough surface with  $1.8\mu\text{m Ra}$ . Micro structure of this broad surface stimulates osseointegration of the implant by increasing the implant-bone contact surface. Thus, SLA surface of Bilimplant provides the best roughness for bone healing around implant.



Edax Analysis was performed at Gebze Technical University and no element was found that cause biocontamination and influence the osseointegration.

# HISTOMORPHOMETRIC EVALUATION

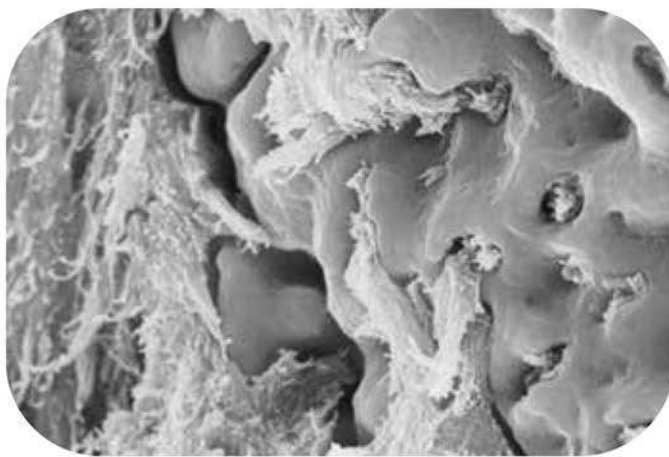
A more effective and faster osseointegration is ensured by the high bone-implant connection of the Bilimplant SLA surface



3 Week (x4)



6 Week (x4)



There are six critical factors influence the process of osseointegration;

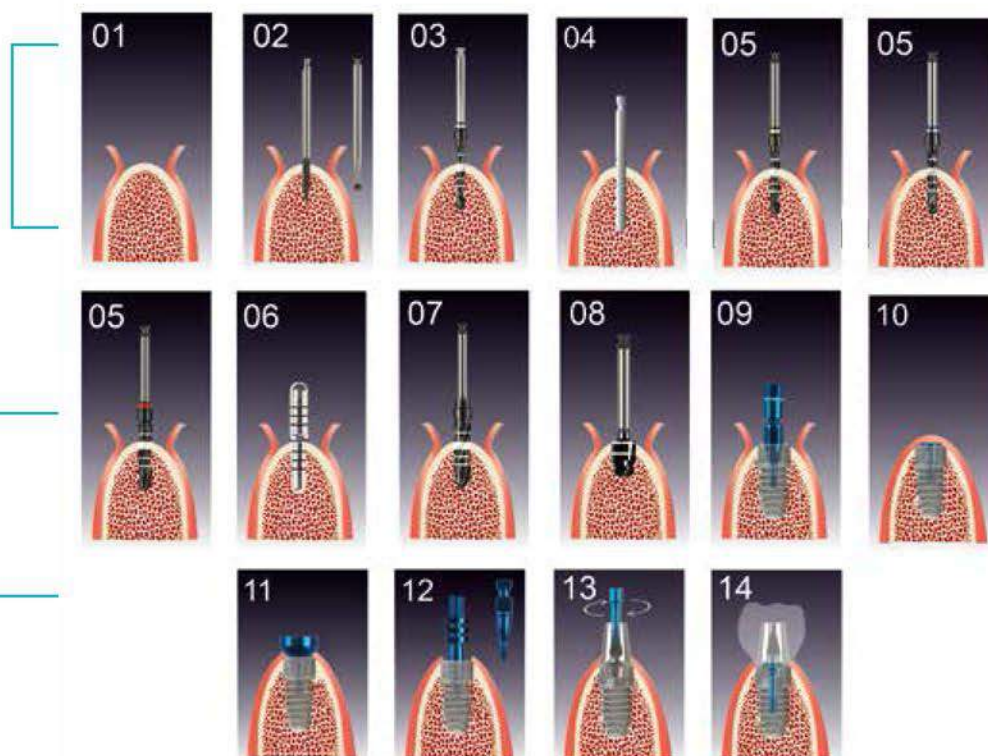
- material biocompatibility
- geometry of the implant
- surface of the implant
- host bone condition
- surgical technique
- loading conditions

Bilimplant, which took the name of science and get strength from science, is produced in the light of scientific literature to provide maximum osseointegration.

\*Çolpak H.A. Vertical Ridge Augmentation Using Bone Graft And Dental Pulp Stem Cells With Simultaneous Dental Implant Placement: A Hystologic Study In A Sheep Model, December 2016

Çolpak H.A., Gönen ZB, Özdamar S, Alkan A, Kütük N. Vertical ridge augmentation using guided bone regeneration procedure and dental pulp derived mesenchymal stem cells with simultaneous dental implant placement: A histologic study in a sheep model.

J Stomatal Oral Maxillofac Surg. 2018 Dec 20. pii: S2468-7855(18)30282-9. doi: 10.1016/j.jormas.2018.12.011.



## With Surgical Contra - Angle Handpiece (20:1);

-Ideal drilling (preparing the implant drill hole) speed: 800 - 1000 rpm

-Ideal implant placement speed: 40 - 50 rpm, torque: 30 - 40 Ncm

1. The mucoperiosteal flap is reflected and the bone is reached at the toothless region where the implant is going to be placed.
2. The implant position is marked with a marking drill.
3. The precise depth of implant is determined by opening the implant hole with a pilot drill.
4. The implant's depth and angle is controlled with an alignment pin.
5. The implant hole is widened consecutively with the drills before the final drill, that is appropriate for the planned implant size and length.
6. The hole depth and angular accuracy is controlled with a parallel pin.
7. The implant hole is ready for placement after final drill.
8. To prevent the compressive strengths and marginal bone loss around the neck of implant, the cortical drills must be used specially for dense bones.
9. The implant is taken from its sterile box with a carriage and is placed into the prepared hole with a ratchet or contra angle handpiece (max speed 50 rpm, max torque 40Ncm) by turning clockwise.
10. After the placement of implant, the cover screw is placed and tightened by turning clockwise and mucoperiosteal flap is closed to prevent the soft tissue ingrowth.
11. After 8-12 weeks osseointegration period; upper part of the implant is uncovered, coverscrew is removed and appropriate healing cap is placed for gingival adaptation.
12. An impression is taken with an open or closed tray impression techniques after the gingival adaptation.
13. The compatible abutment is selected from the abutment options and is fixed with a 30 Ncm force abutment screw
14. After the prosthetic workflow, prepared crown is cemented or screwed onto the abutment.



# IMPLANT BOX, CONTENT AND USER MANUAL



1- The hole on the box is pressed and ripped to open



2- The Blester tray is removed from the box



3- The tyvek paper is removed by pulling to the left and with the open mark at the right



4- The implant box's cap taken from the blester tube is opened by turning to the right. Be careful that the security ring at the cover is not broken; it shows it is opened for the first time. Don't use a product with a broken security ring. The sealing ring on the inside of the cover provides extra security after the tyvek paper to protect the sterilization



5. The implant is placed on a sterile table after it is opened. A medically compatible plastic body protects the implant on the table from a contact with foreign materials.



6. The holder is installed to color coded transfer piece that is assembled to implant. With the help of the precise production and the silicon ring, the implant doesn't fall. There is no need to transfer implant in and upright position.



7. The implant is removed by pushing the ratchet downwards 90° angle



8. The transfer piece is removed by pulling upwards after placement of implant into prepared implant hole.



9. The silicone cap is removed to take the cover screw from the box



10. After the placement of screwdriver to the cover screw, it is gently pushed down and removed from its by pulling upward.



“Laughter is a tranquilizer with no side effects.”  
Arnold Glashow

# BONE LEVEL IMPLANT



1. Only four possible rotational positions ensure clear positioning of the abutment



2.- Conical implant connection distributes the forces deep into the implant and ensures high mechanical stability.



3. Square macro thread design is optimal for the distribution of the marginal forces. This thread pitch decreases the aggressiveness of the implant and increases the primary stability



4. Conical screw connection is reduced its loosening and breakage



5. Platform switch feature preventing the loss of the crestal bone by reducing the stress at the neck region



6. Micro-thread design prevents the marginal bone loss, promotes permanent apposition of bone cells and their retention in the crestal region.



7. Self-tapping design increases the primer stability and facilitates implant placement



Bone level implants were designed for a natural look and feel providing great flexibility and a balanced prosthetic portfolio for every indication. It stands for excellent clinical performance, outstanding esthetics and high patient satisfaction in daily practice

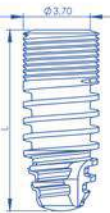
# Bone level Implant

Ø3.2



Size (mm)	8	10	12	14
Diameter	Ø3.2	Ø3.2	Ø3.2	Ø3.2
Product Code	PBL3208	PBL3210	PBL3212	PBL3214

Ø3.7



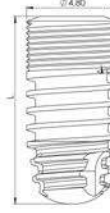
Size (mm)	8	10	12	14
Diameter	Ø3.7	Ø3.7	Ø3.7	Ø3.7
Product Code	PBL3708	PBL3710	PBL3712	PBL3714

Ø4.1



Size (mm)	8	10	12	14
Diameter	Ø4.1	Ø4.1	Ø4.1	Ø4.1
Product Code	PBL4108	PBL4110	PBL4112	PBL4114

Ø4.8



Size (mm)	8	10	12	
Diameter	Ø4.8	Ø4.8	Ø4.8	
Product Code	PBL4808	PBL4810	PBL4812	

# TISSUE LEVEL IMPLANT



1- Conical implant connection distributes the forces deep into the implant and ensures high mechanical stability.



2- Square macro thread design is optimal for the distribution of the marginal forces. This thread pitch decreases the aggressiveness of the implant and increases the primary stability



3- Conical screw connection is reduced its loosening and breakage



4- Micro-thread design prevents the marginal bone loss, promotes permanent apposition of bone cells and their retention in the crestal region.



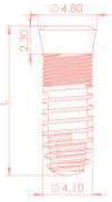
5- Self-tapping design increases the primer stability of the implant and facilitates implant placement



Tissue level implant a pionerr in the transgingival healing is especially suitable for classic one-stage surgery and proven solution for predictable treatment outcomes in all indications.

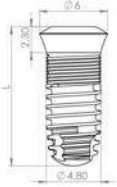
# Tissue level Implant

Ø4.1



Size (mm)	6	8	10	12	14
Diameter	Ø4.1	Ø4.1	Ø4.1	Ø4.1	Ø4.1
Product Code	PTL4106	PTL4108	PTL4110	PTL4112	PTL4114

Ø4.8



Size (mm)	6	8	10	12	
Diameter	Ø4.8	Ø4.8	Ø4.8	Ø4.8	
Product Code	PTL4806	PTL4808	PTL4810	PTL4812	

Material: Titanium Grade 4



## Cover Screws

Cover Screw For Bone Level Implants,  
Narrow Platform

PCS16



Cover Screw For Bone Level Implants,  
Large Platform

PCS18



Cover Screw For Tissue Level Implants,

TCS18



Compatible with Inner structure of the implant, leakproof feature and precision closing screw

## Transfer Piece

Transfer Piece for Bone Level  
Implants, Narrow Platform



PTP16



Transfer Piece for Bone Level  
Implants, Large Platform



PTP18

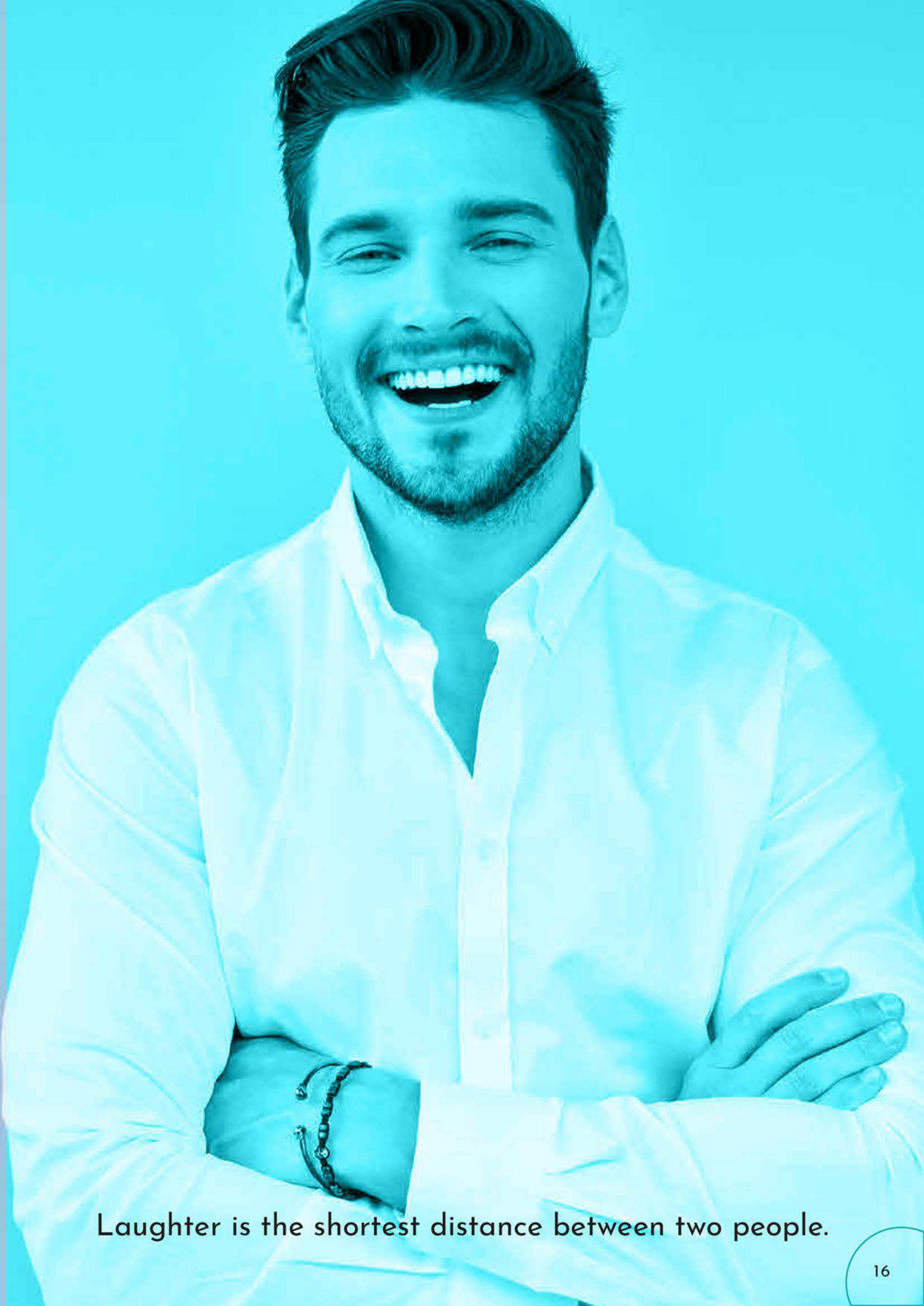


Transfer Piece for Tissue  
Level Implants

PTP18



The transfer piece has an easily removable system after the implant's placement. It also has a safety ring breaking at a 115 Ncm force on hard bones; in this way it prevents the warming of the bone and the bone loss.



Laughter is the shortest distance between two people.

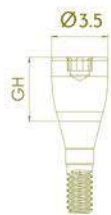


# HEALING CAPS

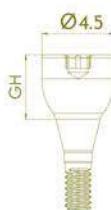


# Healing Caps for Bone Level Implants

## Ø3.2 ve Ø3.7 Implants

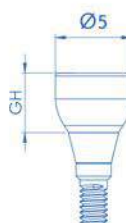


Gingival Height(GH)	2mm	4mm	6mm
Diameter(mm)	Ø3.5	Ø3.5	Ø3.5
Product Code	PHC35H2M16	PHC35H4M16	PHC35H6M16

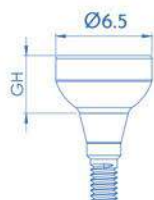


Gingival Height(GH)	2mm	4mm	6mm
Diameter(mm)	Ø4.5	Ø4.5	Ø4.5
Product Code	PHC45H2M16	PHC45H4M16	PHC45H6M16

## Ø4.1 ve Ø4.8 Implants



Gingival Height (GH)	2mm	4mm	6mm
Diameter(mm)	Ø5	Ø5	Ø5
Product Code	PHC50H2M18	PHC50H4M18	PHC50H6M18

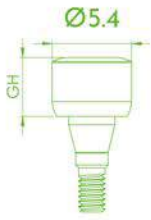


Gingival Height (GH)	2mm	4mm	6mm
Diameter(mm)	Ø6.5	Ø6.5	Ø6.5
Product Code	PHC65H2M18	PHC65H3M18	PHC65H4M18

Material: Titanium Grade 5

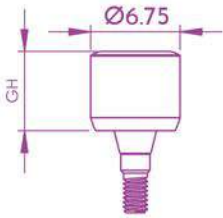
# Healing Caps for Tissue Level Implants

## Ø4.1 Implants



Gingival Height (GH)	2mm	4mm	6mm
Diameter (mm)	Ø5.4	Ø5.4	Ø5.4
Product Code	THC41H2M18	THC41H4M18	THC41H6M18

## Ø4.8 Implants



Gingival Height (GH)	2mm	4mm	6mm
Diameter	Ø6.75	Ø6.75	Ø6.75
Product Code	THC48H2M18	THC48H4M18	THC48H6M18

## Screw Retained Healing Cap

Product Code

TSRAH41



For Ø4.1 Tissue Level Implants

Product Code

TSRAH48



For Ø4.8 Tissue Level Implants

## Screw Retained Healing Cap

Product Code

SRAH



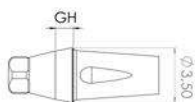
for all bone level implant diameters

# STRAIGHT ABUTMENTS

All screws have an increased risk of loosening due to metal fatigue in repetitive placements. Bilimplant recommends the use of clinical screws during delivery of prosthesis which are colored and have improved surface properties. Standard colorless screws are recommended only for laboratory procedures and clinical try-ins.

## Ø3.5 Bone Level Straight Abutment

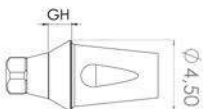
Abutment Height : 5.5mm and 7mm



Gingival Height (GH)	1mm	2mm	3mm	4mm	5mm
Diameter	Ø3.5	Ø3.5	Ø3.5	Ø3.5	Ø3.5
Product Code	PAD35GH1M16	PAD35GH2M16	PAD35GH3M16	PAD35GH4M16	PAD35GH5M16

## Ø4.5 Bone Level Straight Abutment

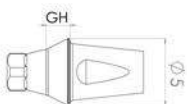
Abutment Height: 5.5mm and 7mm



Gingival Height (GH)	1mm	2mm	3mm	4mm	5mm
Diameter	Ø4.5	Ø4.5	Ø4.5	Ø4.5	Ø4.5
Product Code	PAD45GH1M16	PAD45GH2M16	PAD45GH3M16	PAD45GH4M16	PAD45GH5M16

## Ø5 Bone Level Straight Abutment

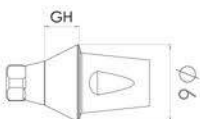
Abutment Height: 5.5mm and 7mm



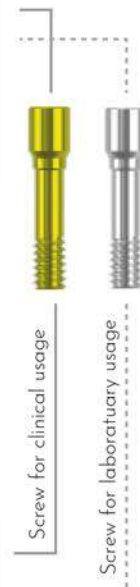
Gingival Height (GH)	1mm	2mm	3mm	4mm	5mm
Diameter	Ø5	Ø5	Ø5	Ø5	Ø5
Product Code	PAD50GH1M18	PAD50GH2M18	PAD50GH3M18	PAD50GH4M18	PAD50GH5M18

## Ø6 Bone Level Straight Abutment

Abutment Height: 5.5mm and 7mm



Gingival Height (GH)	1mm	2mm	3mm	4mm	5mm
Diameter	Ø6	Ø6	Ø6	Ø6	Ø6
Product Code	PAD60GH1M18	PAD60GH2M18	PAD60GH3M18	PAD60GH4M18	PAD60GH5M18



# ESTHETIC ABUTMENTS

All screws have an increased risk of loosening due to metal fatigue in repetitive placements. Bilimplant recommends the use of clinical screws during delivery of prosthesis which are colored and have improved surface properties. Standard colorless screws are recommended only for laboratory procedures and clinical try-ins.

## Ø4.5 A-Angled Esthetic Abutment

Abutment Height : 5.5 mm



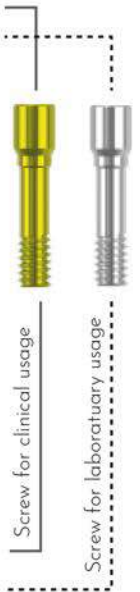
Gingival Height (GH)	1mm	2mm	3mm	4mm	5mm
Diameter	Ø4.5	Ø4.5	Ø4.5	Ø4.5	Ø4.5
Product Code	PEAD45GH1M16	PEAD45GH2M16	PEAD45GH3M16	PEAD45GH4M16	PEAD45GH5M16

## Ø4.5 B-Angled Esthetic Abutment

Abutment Height : 5.5 mm

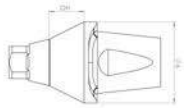


Gingival Height (GH)	1mm	2mm	3mm	4mm	5mm
Diameter	Ø4.5	Ø4.5	Ø4.5	Ø4.5	Ø4.5
Product Code	BEAD45GH1M16	BEAD45GH2M16	BEAD45GH3M16	BEAD45GH4M16	BEAD45GH5M16



## Ø6 A-Angled Esthetic Abutment

Abutment Height: 5.5 mm

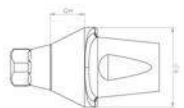


Gingival Height (GH)	1mm	2mm	3mm	4mm	5mm
Diameter	Ø6	Ø6	Ø6	Ø6	Ø6
Product Code	PEAD60GH1M18	PEAD60GH2M18	PEAD60GH3M18	PEAD60GH4M18	PEAD60GH5M18

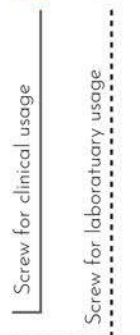


## Ø6 B-Angled Esthetic Abutment

Abutment Height : 5.5 mm



Gingival Height (GH)	1mm	2mm	3mm	4mm	5mm
Diameter	Ø6	Ø6	Ø6	Ø6	Ø6
Product Code	BEAD60GH1M18	BEAD60GH2M18	BEAD60GH3M18	BEAD60GH4M18	BEAD60GH5M18





# ANGLED ABUTMENTS

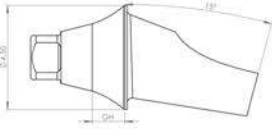
In order to increase placement options, all angled abutments are produced with A and B types that enables the abutments to be placed in 8 different ways into the implant body. Thus, the need for abutment preparation is reduced.



# BONE LEVEL A-ANGLED ABUTMENT

## 15° A-Angled Abutment Narrow Platform

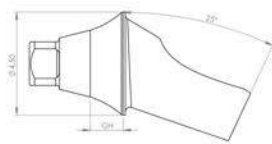
Abutment Height: 5.5 mm



Gingival Height (GH)	1mm	2mm	3mm	4mm
Angle	15°	15°	15°	15°
Product Code	PAA15GH1M16	PAA15GH2M16	PAA15GH3M16	PAA15GH4M16

## 25° A Angled Abutment Narrow Platform

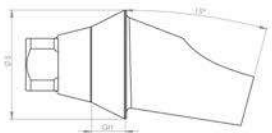
Abutment Height: 5.5 mm



Gingival Height (GH)	1mm	2mm	3mm	4mm
Angle	25°	25°	25°	25°
Product Code	PAA25GH1M16	PAA25GH2M16	PAA25GH3M16	PAA25GH4M16

## 15° A Angled Abutment Large Platform

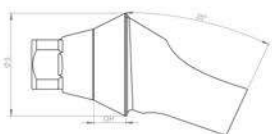
Abutment Height: 5.5 mm



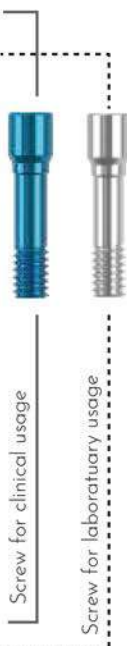
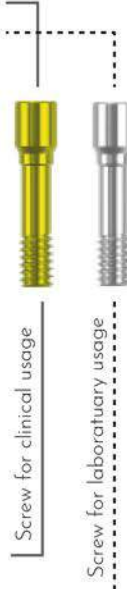
Gingival Height (GH)	1mm	2mm	3mm	4mm
Angle	15°	15°	15°	15°
Product Code	PAA15GH1M18	PAA15GH2M18	PAA15GH3M18	PAA15GH4M18

## 25° A Angled Abutment Large Platform

Abutment Height: 5.5 mm



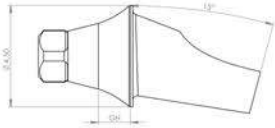
Gingival Height (GH)	1mm	2mm	3mm	4mm
Angle	25°	25°	25°	25°
Product Code	PAA25GH1M18	PAA25GH2M18	PAA25GH3M18	PAA25GH4M18



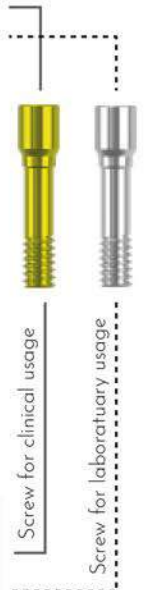
# BONE LEVEL B-ANGLED ABUTMENT

## 15° B-Angled Abutment Narrow Platform

Abutment Height: 5.5 mm

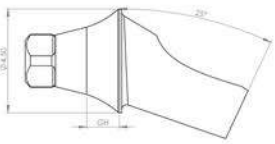


Gingival Height (GH)	1mm	2mm	3mm	4mm
Angle	15°	15°	15°	15°
Product Code	BAA15GH1M16	BAA15GH2M16	BAA15GH3M16	BAA15GH4M16

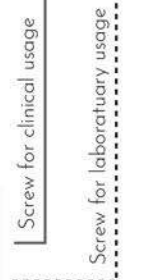


## 25° B-Angled Abutment Narrow Platform

Abutment Height: 5.5 mm

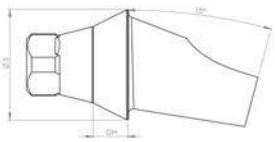


Gingival Height (GH)	1mm	2mm	3mm	4mm
Angle	25°	25°	25°	25°
Product Code	BAA25GH1M16	BAA25GH2M16	BAA25GH3M16	BAA25GH4M16



## 15° B-Angled Abutment Large Platform

Abutment Height: 5.5 mm

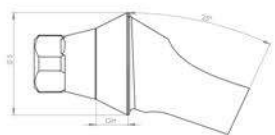


Gingival Height (GH)	1mm	2mm	3mm	4mm
Angle	15°	15°	15°	15°
Product Code	BAA15GH1M18	BAA15GH2M18	BAA15GH3M18	BAA15GH4M18

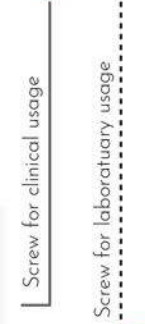


## 25° B-Angled Abutment Large Platform

Abutment Height: 5.5 mm



Gingival Height (GH)	1mm	2mm	3mm	4mm
Angle	25°	25°	25°	25°
Product Code	BAA25GH1M18	BAA25GH2M18	BAA25GH3M18	BAA25GH4M18



TISSUE  
LEVEL  
ABUTMENTS

## Straight Abutment

Product Code

TPAD



Abutment Height : 5.5 mm ve 7 mm

## Angled Abutments

15° A-Angled Tissue Level Abutment

15° B-Angled Tissue Level Abutment

Product Code

TPAA15

A 15°



Product Code

TBAA15

B 15°



Abutment Height : 5.5 mm and 7 mm

20° A-Angled Tissue Level Abutment

20° B-Angled Tissue Level Abutment

Product Code

TPAA20

A 20°



Product Code

TBAA20

B 20°



Abutment Height : 5.5 mm and 7 mm

25° A-Angled Tissue Level Abutment

25° B-Angled Tissue Level Abutment

Product Code

TPAA25

A 25°



Product Code

TBAA25

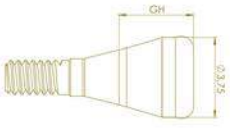
B 25°



Abutment Height : 5.5 mm and 7 mm

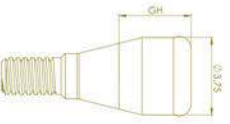
LOCATOR  
ABUTMENTS

### Locators for Ø3.2 and Ø3.7 Bone Level Implants



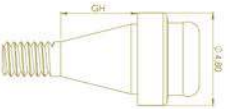
Gingival Height (mm)	2	3	4	5	6
Product Code	PAAGH2M16	PAAGH3M16	PAAGH4M16	PAAGH5M16	PAAGH6M16

### Locators for Ø4.1 and Ø4.8 Bone Level Implants



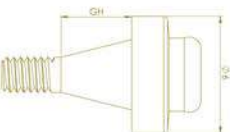
Gingival Height (mm)	2	3	4	5	6
Product Code	PAAGH2M18	PAAGH3M18	PAAGH4M18	PAAGH5M18	PAAGH6M18

### Locators for Ø4.1 Tissue Level Implant



Gingival Height (mm)	2	3	4	5	6
Product Code	TPAA41GH2M18	TPAA41GH3M18	TPAA41GH4M18	TPAA41GH5M18	TPAA41GH6M18

### Locators for Ø4.8 Tissue Level Implant



Gingival Height (mm)	2	3	4	5	6
Product Code	TPAA48GH2M18	TPAA48GH3M18	TPAA48GH4M18	TPAA48GH5M18	TPAA48GH6M18



BALL  
ATTACHMENT  
ABUTMENTS

Bone Level Ball Attachment Narrow Platform Abutment  
 Ø 3.2 ve Ø 3.7



Gingival Height (mm)	2	3	4	5
Product Code	BBAGH2M16	BBAGH3M16	BBAGH4M16	BBAGH5M16

Bone Level Ball Attachment Large Platform Abutment  
 Ø 4.1 ve Ø 4.8



Gingival Height (mm)	2	3	4	5
Product Code	BBAGH2M18	BBAGH3M18	BBAGH4M18	BBAGH5M18

Tissue Level Ball Attachment Large Platform Abutment  
 Ø 4.1 ve Ø 4.8



Gingival Height (mm)	2	3	4	5
Product Code	TBAGH2M16	TBAGH3M16	TBAGH4M16	TBAGH5M16

Bone Level Multi Lock Metal Cap



Bone Level Multi No Lock Metal Cap



Ø4.1 Tissue Level Multi Lock Metal Cap



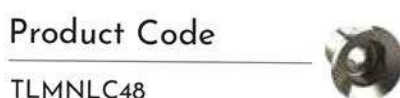
Ø4.1 Tissue Level Level Multi No Lock Metal Cap



Ø4.8 Tissue Level Multi Lock Metal Cap

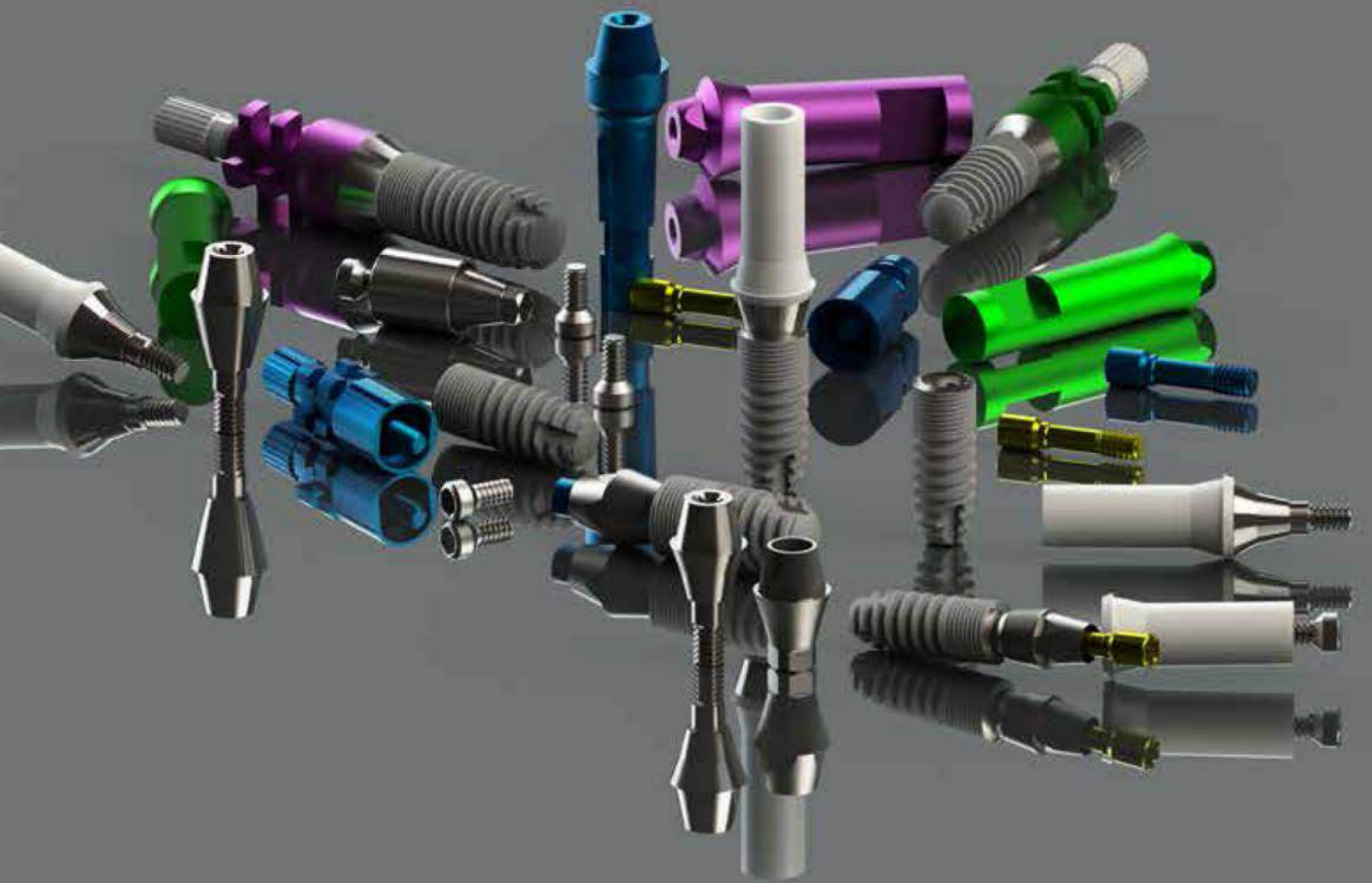


Ø4.8 Tissue Level Level Multi No Lock Metal Cap



# SCREW RETAINED ABUTMENTS

Our screw retained abutments are produced as single and double pieces. Dentists are able to choose the most appropriate abutments according to their practice and indications with the help of a wide range of superstructure options.



## Tissue Level Screw Retained Abutment

Product Code

TSRAD



### Occlusal Screw

Product Code

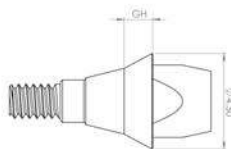
VTDV14



\*Burn-out Coping



### Ø4.5 Narrow Platform Screw Retained Abutment



Gingival Height (GH)	1mm	2mm	3mm	4mm	5mm
Diameter(mm)	Ø4.5	Ø4.5	Ø4.5	Ø4.5	Ø4.5
Product Code	SRAD45GH1M16	SRAD45GH2M16	SRAD45GH3M16	SRAD45GH4M16	SRAD45GH5M16

### Occlusal Screw

Product Code

VTDV14



\* Burn-out Coping

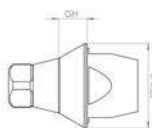


### Narrow Platform Screw Retained Abutment Screw



Gingival Height (GH)	1mm	2mm	3mm	4mm	5mm
Product Code	SRASGH1M16	SRASGH2M16	SRASGH3M16	SRASGH4M16	SRASGH5M16

### Ø4.5 Narrow Platform Screw Retained Abutment



Gingival Height (GH)	1mm	2mm	3mm	4mm	5mm
Diameter(mm)	Ø4.5	Ø4.5	Ø4.5	Ø4.5	Ø4.5
Product Code	DSRAD45GH1M16	DSRAD45GH1M16	DSRAD45GH1M16	DSRAD45GH1M16	DSRAD45GH1M16

\*There are 2 different types of internal connection design for the crown and the bridge. Modeling can be done on the abutment, the desired type can be casted and sensitive links can be pasted

### Occlusal Screw

Product Code

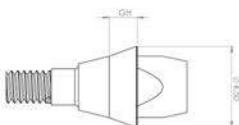
VTDV14



### \*Burn-out Coping



### Ø4.5 Large Platform Screw Retained Abutment



Gingival Height (GH)	1mm	2mm	3mm	4mm	5mm
Diameter(mm)	Ø4.5	Ø4.5	Ø4.5	Ø4.5	Ø4.5
Product Code	SRAD45GH1M16	SRAD45GH2M16	SRAD45GH3M16	SRAD45GH4M16	SRAD45GH5M16

### Occlusal Screw

Product Code

VTDV14



### \*Burn-out Coping

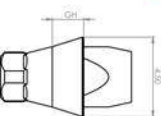


### Large Platform Screw Retained Abutment Screw



Gingival Height (GH)	1mm	2mm	3mm	4mm	5mm
Product Code	SRASGH1M18	SRASGH2M18	SRASGH3M18	SRASGH4M18	SRASGH5M18

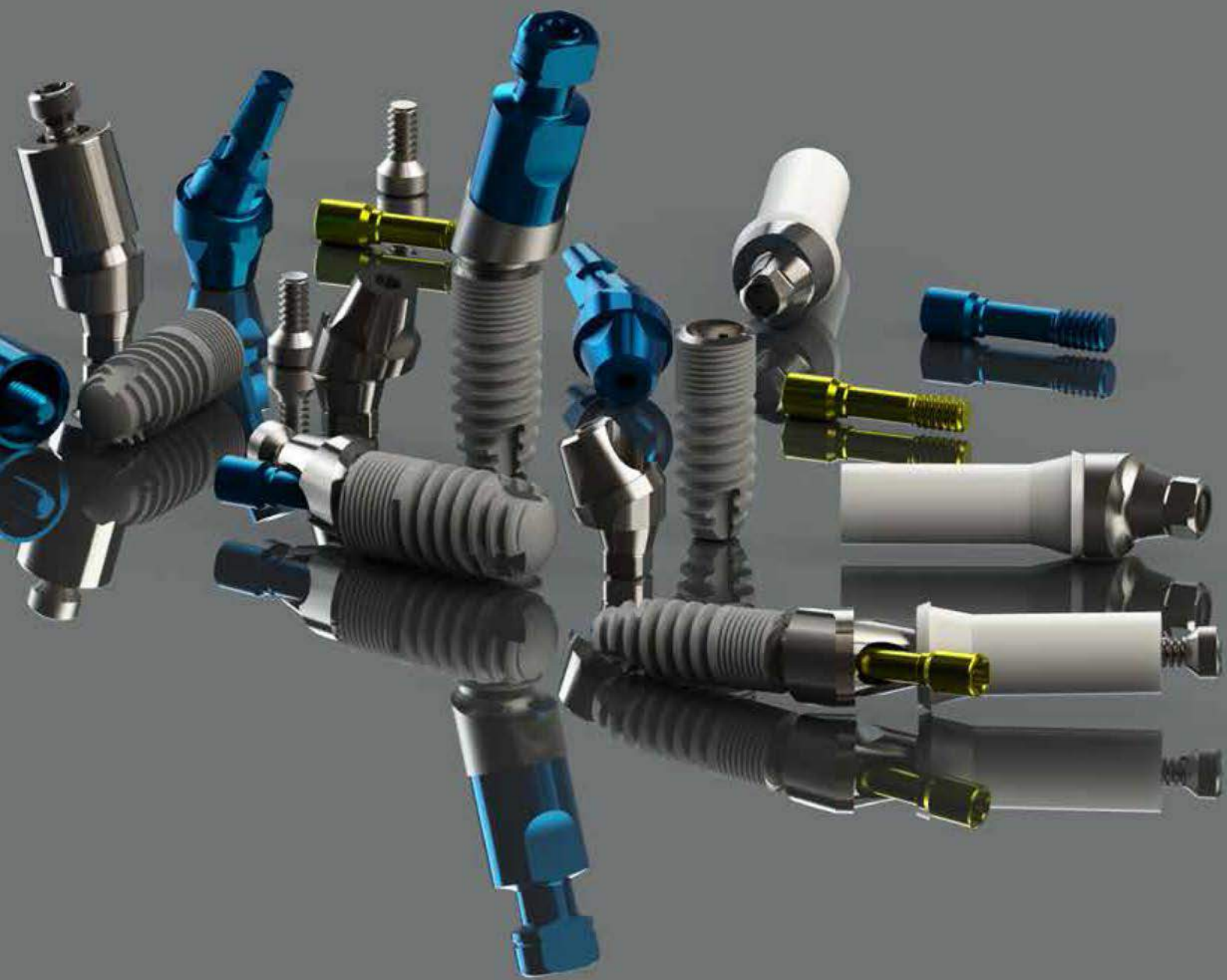
### Ø4.5 Large Platform Screw Retained Abutment



Gingival Height (GH)	1mm	2mm	3mm	4mm	5mm
Diameter(mm)	Ø4.5	Ø4.5	Ø4.5	Ø4.5	Ø4.5
Product Code	DSRAD45GH1M18	DSRAD45GH1M18	DSRAD45GH1M18	DSRAD45GH1M18	DSRAD45GH1M18

\*There are 2 different types of internal connection design for the crown and the bridge. Modeling can be done on the abutment, the desired type can be casted and sensitive links can be pasted

ANGLED  
SCREW  
RETAINED  
ABUTMENTS





# Bone Level Narrow Platform

Occlusal Screw

\*Burn-out Coping

Abutment Screw

Product Code

VTDV14



## 15° A-Angled Screw Retained Abutment



Gingival Height (GH)	1mm	2mm	3mm
Angle	15°	15°	15°
Product Code	ASRA15GH1M16	ASRA15GH2M16	ASRA15GH3M16



## 15° B-Angled Screw Retained Abutment



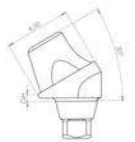
Gingival Height (GH)	1mm	2mm	3mm
Angle	15°	15°	15°
Product Code	BSRA15GH1M16	BSRA15GH2M16	BSRA15GH3M16



## 30° A-Angled Screw Retained Abutment



Gingival Height (GH)	1mm	2mm	3mm
Angle	30°	30°	30°
Product Code	ASRA30GH1M16	ASRA30GH2M16	ASRA30GH3M16



## 30° B-Angled Screw Retained Abutment



Gingival Height (GH)	1mm	2mm	3mm
Angle	30°	30°	30°
Product Code	BSRA30GH1M16	BSRA30GH2M16	BSRA30GH3M16



\*There are 2 different types of internal connection design for the crown and the bridge. Modeling can be done on the abutment, the desired type can be casted and sensitive links can be pasted

# Bone Level Large Platform ▶

## Occlusal Screw

## \*Burn-out Coping

## Abutment Screw

Product Code

VTDV14



### 15° A-Angled Screw Retained Abutment



Gingival Height (GH)

1mm

2mm

3mm

Angle

15°

15°

15°

Product Code

ASRA15GH1M18

ASRA15GH2M18

ASRA15GH3M18



### 15° B-Angled Screw Retained Abutment



Gingival Height (GH)

1mm

2mm

3mm

Angle

15°

15°

15°

Product Code

BSRA15GH1M18

BSRA15GH2M18

BSRA15GH3M18



### 30° A-Angled Screw Retained Abutment



Gingival Height (GH)

1mm

2mm

3mm

Angle

30°

30°

30°

Product Code

ASRA30GH1M18

ASRA30GH2M18

ASRA30GH3M18



### 30° B-Angled Screw Retained Abutment



Gingival Height (GH)

1mm

2mm

3mm

Angle

30°

30°

30°

Product Code

BSRA30GH1M18

BSRA30GH2M18

BSRA30GH3M18



\*There are 2 different types of internal connection design for the crown and the bridge. Modeling can be done on the abutment, the desired type can be casted and sensitive links can be pasted

# TI-BASE ABUTMENTS

All screws have an increased risk of loosening due to metal fatigue in repetitive placements. Bilimplant recommends the use of clinical screws during delivery of prosthesis which are colored and have improved surface properties. Standard colorless screws are recommended only for laboratory procedures and clinical try-ins.

## BONE LEVEL TI-BASE ABUTMENT

### Narrow Platform Ti-Base Abutment (Single Crown)

			
Gingival Height (GH)	4mm	6mm	
Product Code	BLTIBKRGH4M16	BLTIBKRGH6M16	 

### Narrow Platform Ti-Base Abutment (Bridge)

			
Gingival Height (GH)	4mm	6mm	
Product Code	BLTIBKPGH4M16	BLTIBKPGH6M16	 

### Large Platform Ti-Base Abutment (Single Crown)

			
Gingival Height (GH)	4mm	6mm	
Product Code	BLTIBKRGH4M18	BLTIBKRGH6M18	 

### Large Platform Ti-Base Abutment (Bridge)

			
Gingival Height (GH)	4mm	6mm	
Product Code	BLTIBKPGH4M18	BLTIBKPGH6M18	 

## TISSUE LEVEL TI-BASE ABUTMENT

### Large Platform Ti-Base Abutment (Single Crown)

			
Gingival Height (GH)	4mm	6mm	
Product Code	TLTIBKRGH4M18	TLTIBKRGH6M18	 

### Large Platform Ti-Base Abutment (Bridge)

			
Gingival Height (GH)	4mm	6mm	
Product Code	TLTIBKPGH4M18	TLTIBKPGH6M18	 

Material: Titanium Grade 5

# MESO ABUTMENTS

If you need to customize your abutments (case-specific gingival shape and abutment height) without the need of CAD/CAM equipment, we have MESO abutment option that can be shaped using basic laboratory equipments.

## Bone Level Meso Abutment

Product Code

MAD6125



Product Code

MAD8125



## Tissue Level Meso Abutment

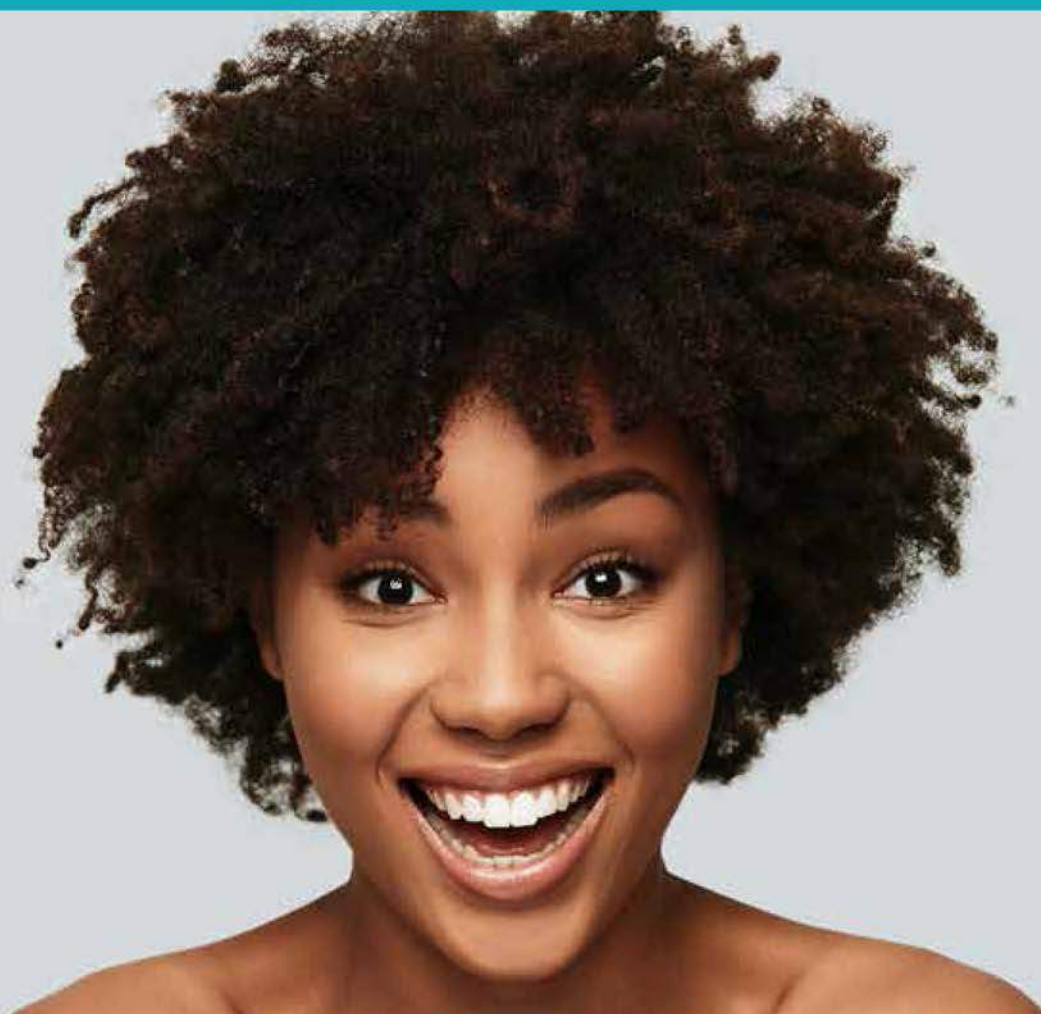
Product Code

MAT6125



Product Code

MAT8125



IMPRESSION  
TRANSFERS

# BONE LEVEL IMPRESSION TRANSFERS

## Impression Post for Open Tray Technique Narrow Platform

Product Code  
BL001



## Impression Post for Open Tray Technique Large Platform

Product Code  
BL003



## Impression Post for Closed Tray Technique, Narrow Platform

Product Code  
BL005



## Plastic Impression Cap For Closed Tray Technique, Narrow Platform

Product Code  
BL009



## Impression Post for Closed Tray Technique, Large Platform

Product Code  
BL007



## Plastic Impression Cap For Closed Tray Technique, Large Platform

Product Code  
BL010



## Bone Level Implant Analog, Narrow Platform

Product Code  
BL011



## Bone Level Implant Analog, Large Platform

Product Code  
BL012



## Locator Analog

Product Code  
BLHT001





# BONE LEVEL IMPLANT, IMPRESSION POST FOR SCREW RETAINED PROSTHESIS (ABUTMENT LEVEL)

Impression Post for Open Tray Technique

Product Code: BLVT001



Impression Post for Closed Tray Technique

Product Code: BLVT003



Single Crown Type Burn-out Coping

Product Code: BLVT008



Bridge Type Burn-out Coping

Product Code: BLVT009



\*Straight Analog

Product Code: BLVT005



\*15° Angled Analog

Product Code: BLVT006



\*30° Angled Analog

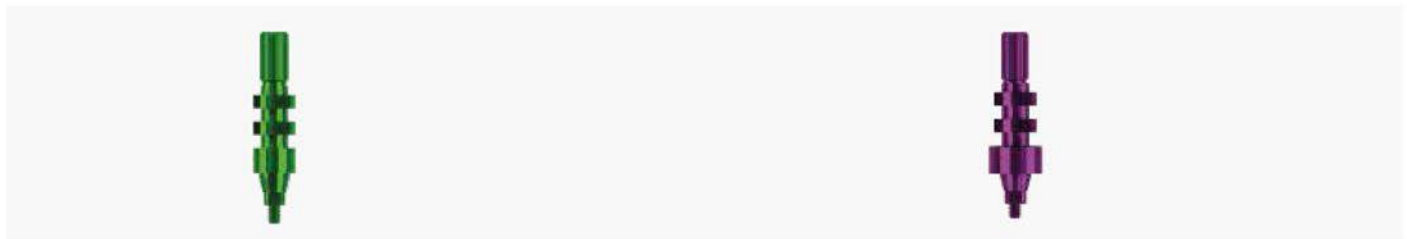
Product Code: BLVT009



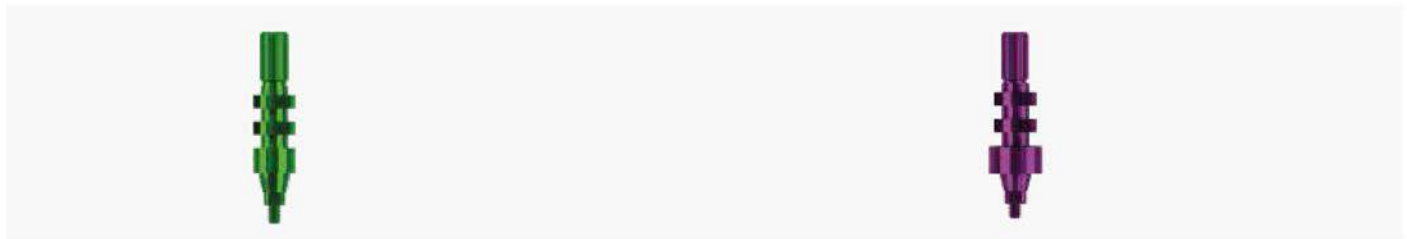
\*Angled and straight analogue platforms are exactly the same and can be used in place of on another the reason for angled analogue manufacturing feasibility the analogue placement into the closely placed implants.

# TISSUE LEVEL IMPRESSION TRANSFERS

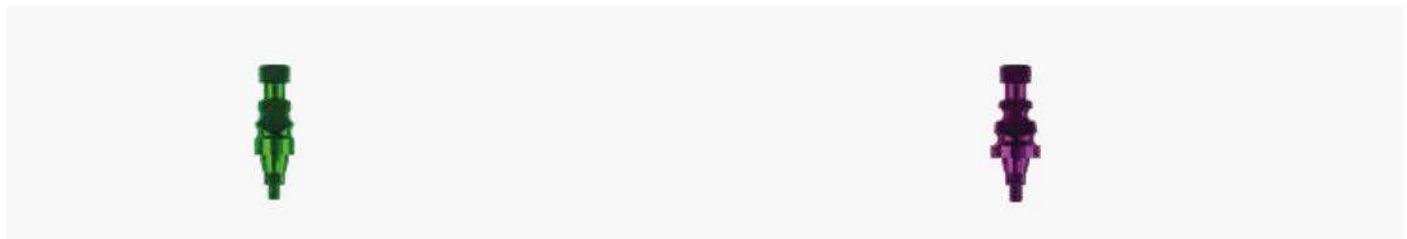
Ø4.1 Tissue Level Implant,  
Impression Post for Open Tray Technique  
Product Code: TL001



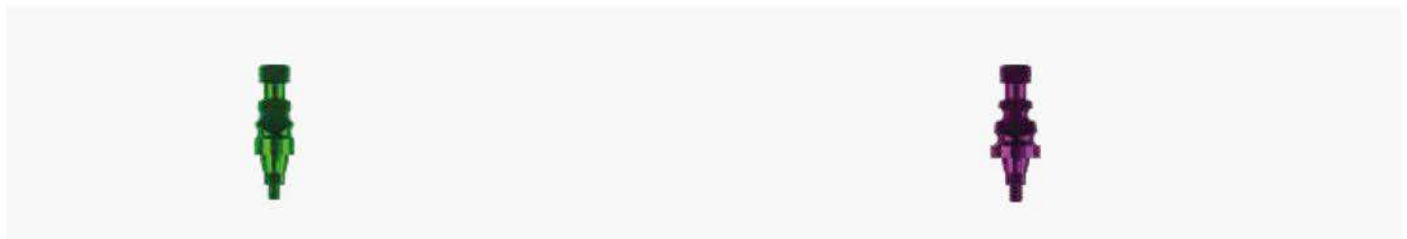
Ø4.8 Tissue Level Implant,  
Impression Post for Open Tray Technique  
Product Code: TL003



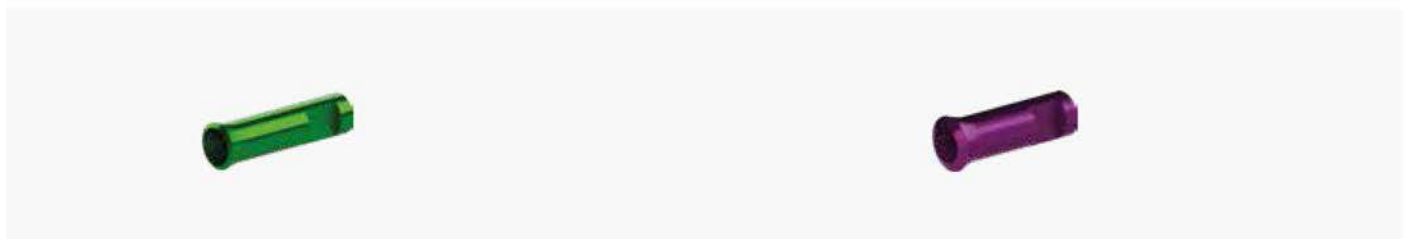
Ø4.1 Tissue Level Implant,  
Impression Post for Closed Tray Technique  
Product Code: TL005



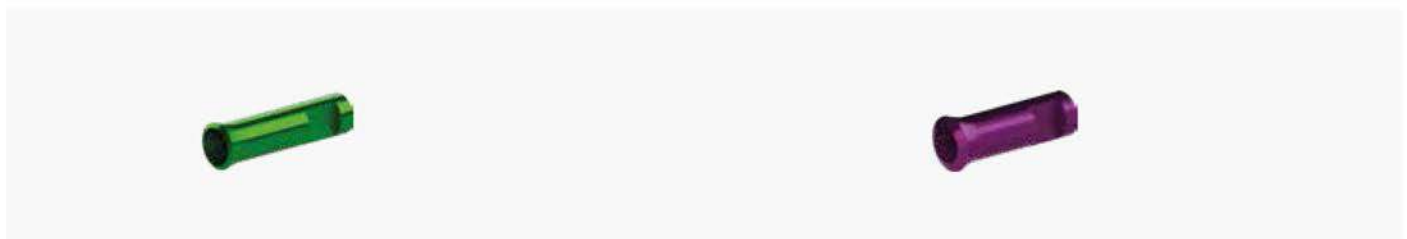
Ø4.8 Tissue Level Implant,  
Impression Post for Closed Tray Technique  
Product Code: TL007



Ø4.1 Tissue Level Implant Analog  
Product Code: TL009



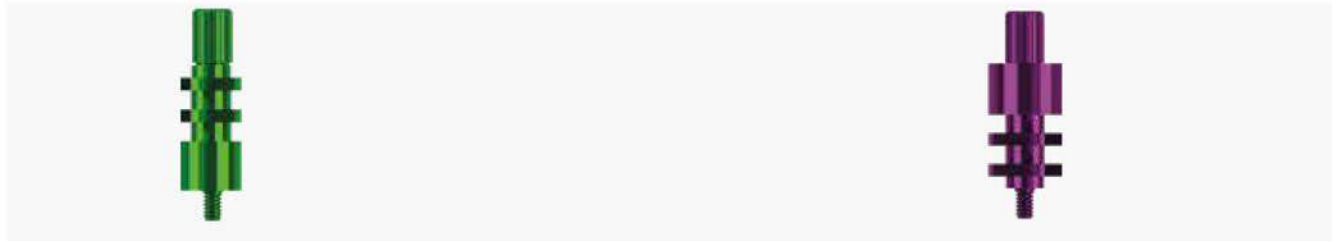
Ø4.8 Tissue Level Implant Analog  
Product Code: TL010



# TISSUE LEVEL IMPLANT, IMPRESSION POST FOR SCREW RETAINED PROSTHESIS (ABUTMENT LEVEL)

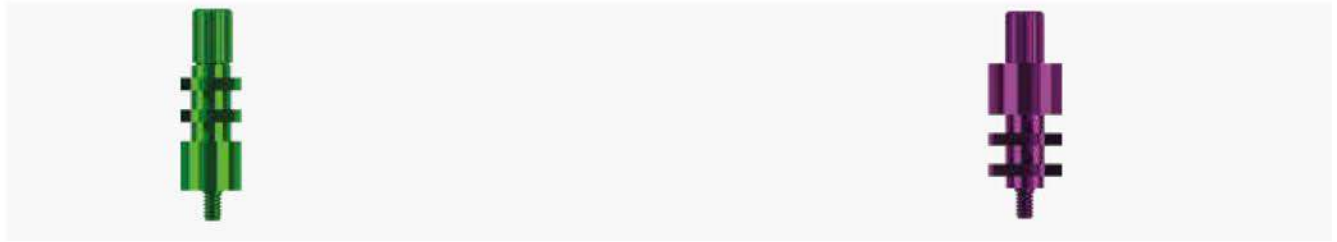
Ø4.1 Impression Post for Open Tray Technique

Product Code: TLVT001



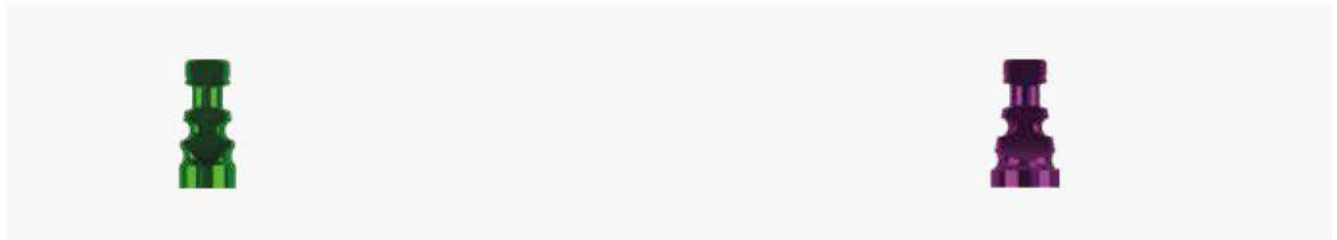
Ø4.8 Impression Post for Open Tray Technique

Product Code: TLVT003



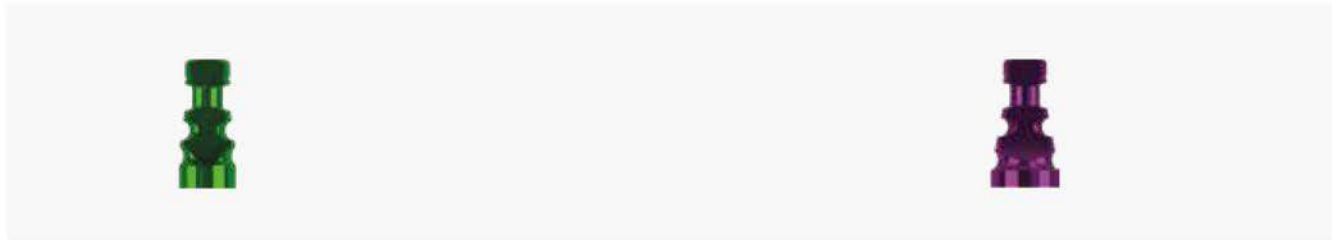
Ø4.1 Impression Post for Closed Tray Technique

Product Code: TLVT001



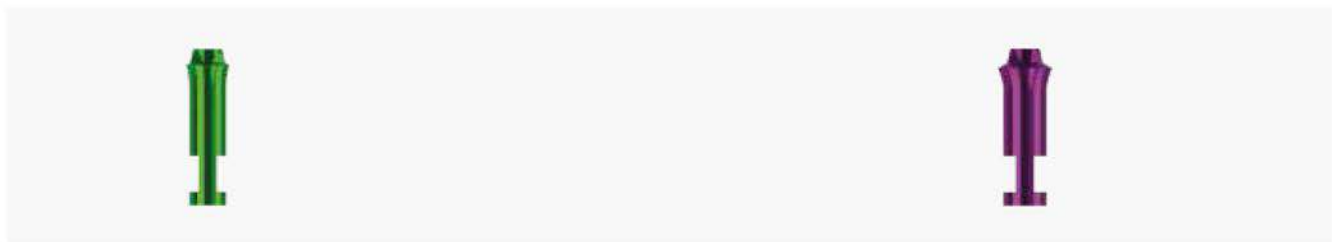
Ø4.8 Impression Post for Closed Tray Technique

Product Code: TLVT003



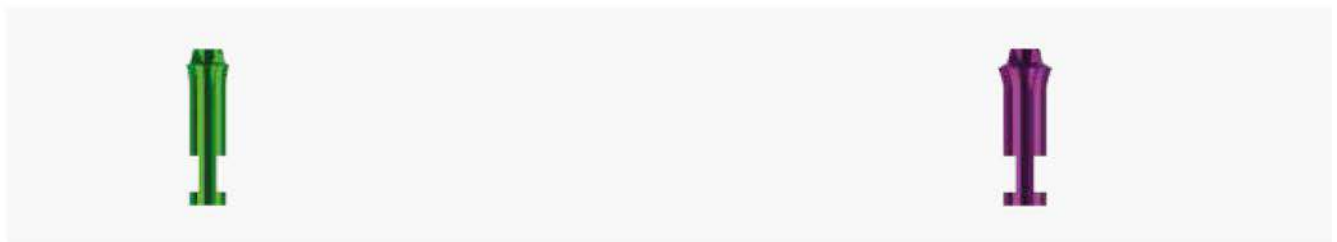
Ø4.1 Implant Analog

Product Code: TLVT009



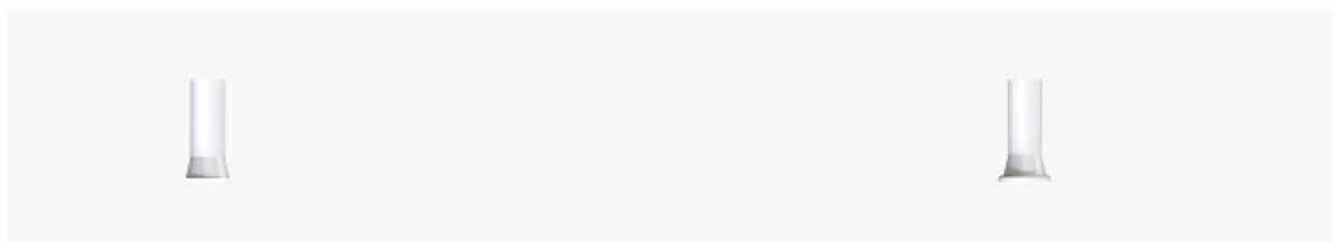
Ø4.8 Implant Analog

Product Code: TLVT010



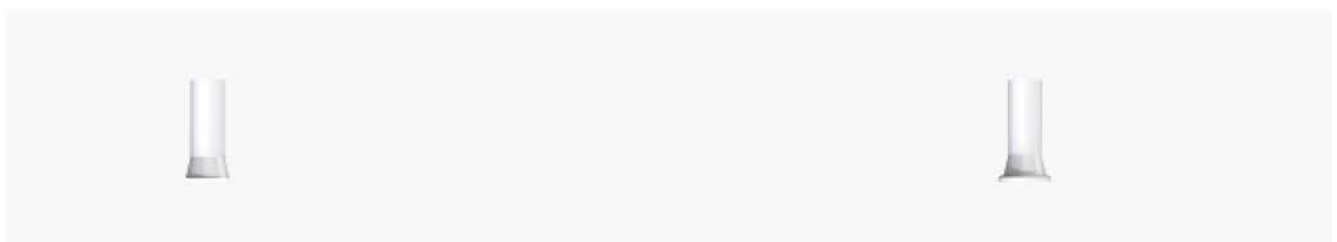
Ø4.1 Bridge Type Burn-out Coping

Product Code: TLVT011



Ø4.8 Bridge Type Burn-out Coping

Product Code: TLVT012





"Keep smiling, because life is a beautiful thing and there's so much to smile about."



Product Code

CERS



The surgical set and its content is professionally prepared by our consultant team has been designed to be easily used by all doctors and to meet all the surgical processes' needs

# SET CONTENT



## Drill Extension

Product Code  
DEXT



## Ø2.2 Marking Drill (Pointed)

Product Code  
PDS



## Marking Drill (Round)

Product Code  
PDRB



## Ø2.2 Pilot Drill, Short

Product Code  
PD22



## Ø2.2 Pilot Drill, Long

Product Code  
PDL22



## Ø 3.2 Implant Drill, Short

Product Code  
ID32



## Ø 3.2 Implant Drill, Long

Product Code  
IDL32



## Ø 3.2 Cortical Drill

Product Code  
CD32



## Ø 3.7 Implant Drill, Short

Product Code  
ID37



## Ø 3.7 Implant Drill, Long

Product Code  
IDL37



## Ø 3.7 Cortical Drill

Product Code  
CD37



## Ø 4.1 Implant Drill, Short

Product Code  
ID41



## Ø 4.1 Implant Drill, Long

Product Code  
IDL41



## Ø 4.1 Cortical Drill

Product Code  
CD41



## Ø 4.8 Implant Drill, Short

Product Code  
ID48



## Ø 4.8 Implant Drill, Long

Product Code  
IDL48



## Ø 4.8 Cortical Drill

Product Code  
CD48



## Alignment Pin

Product Code  
100AP



## 1. Parallel Pin for Ø3.2 and Ø3.7 implants

Product Code  
101PP



## 2. Parallel Pin for Ø4.1 and Ø4.8 implants

Product Code  
102PP



## Ratchet Adapter 24 mm

Ürün Kodu  
TSPA24



## Screwdriver 28 mm

Ürün Kodu  
SCSA28



## Explantation Device, Narrow Platform

Ürün Kodu  
IDP16



## Ratchet Adapter 19 mm

Ürün Kodu  
TSPA19



## Screwdriver 23 mm

Ürün Kodu  
SCSA23



## Explantation Device, Large Platform

Ürün Kodu  
IDP18



## Ratchet Adapter 12 mm

Ürün Kodu  
TSP12



## Screwdriver 16 mm

Ürün Kodu  
SCSA16

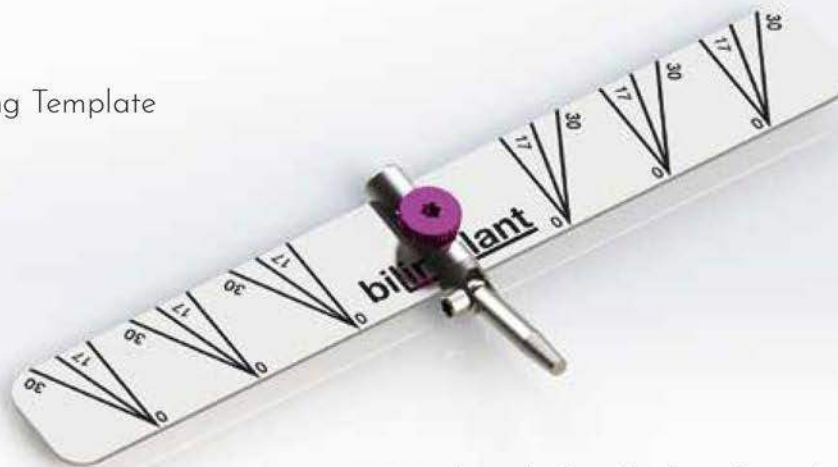


## Ratchet

Product Code  
RCHT








## Bilimplant® Planning Template













Visual guide for tilted implant placement in "all on four" cases

# STOPPER KIT



					
Length	14mm	12mm	10mm	8mm	6mm
Diameter	Ø3.2	Ø3.2	Ø3.2	Ø3.2	Ø3.2
Product Code	DS3214	DS3212	DS3210	DS3208	DS3206

					
Length	14mm	12mm	10mm	8mm	6mm
Diameter	Ø3.7	Ø3.7	Ø3.7	Ø3.7	Ø3.7
Product Code	DS3714	DS3712	DS3710	DS3708	DS3706

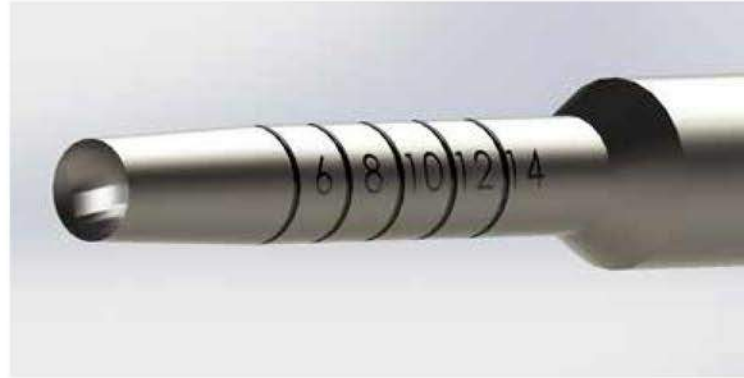
					
Length	14mm	12mm	10mm	8mm	6mm
Diameter	Ø4.1	Ø4.1	Ø4.1	Ø4.1	Ø4.1
Product Code	DS4114	DS4112	DS4110	DS4108	DS4106

					
Length	14mm	12mm	10mm	8mm	6mm
Diameter	Ø4.8	Ø4.8	Ø4.8	Ø4.8	Ø4.8
Product Code	DS4814	DS4812	DS4810	DS4808	DS4806



# OSTEOTOME INSTRUMENT KIT FOR SINUS FLOOR ELEVATION

Product Code  
OSK



## WE ARE NOW IN THE LIBRARY OF OSTELL ISQ, USED FOR MEASUREMENTS OF IMPLANT STABILITY

### New SmartPegs Reference List Available!

Valid from December 2018

[← Back to news/events](#)



25016-67

### SmartPeg Reference Guide

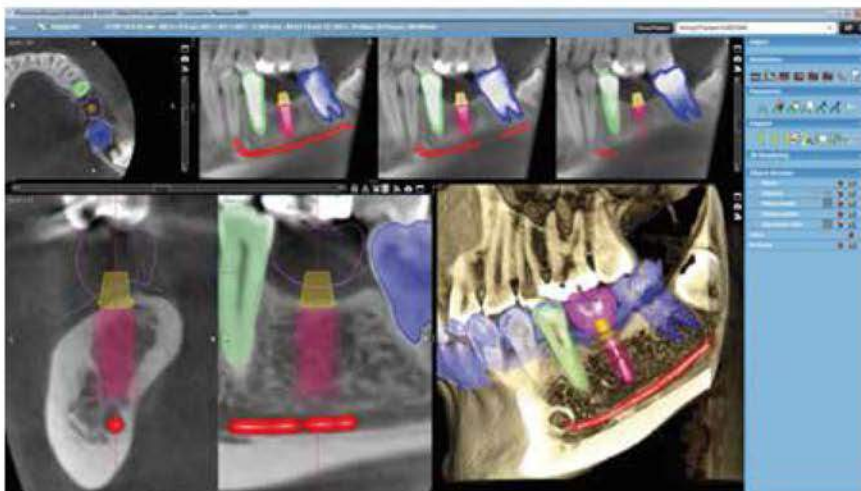
Valid from December 2018 | 25016-67

Implant Company	Model	Catalog No	Platform	Angle	Diameter (mm)	Length (mm)	Art. No	SmartPeg	New
BILIMPLANT	BONE LEVEL IMPLANT				3.7		100402	Type 21	New
	BONE LEVEL IMPLANT				4.1		100480	Type 49	New

### The ISQ scale



## WE ARE NOW IN PLANMECA ROMEXIS IMPLANT LIBRARY







All in one  
with ABSimplant;

Passion  
Future  
Quality

# Vision Innovation SCIENCE



Produced by Proimtech

Dudullu OSB Mahallesi İmes 305 Sokak C blok No:3 Ümraniye / İstanbul  
Proimtech Sağlık Hizmetleri San. Tic. Ltd. Şti

Turkey  
Discover  
the potential

CE

1984

[www.absimplant.com](http://www.absimplant.com)